



An open, multi-function space that can be transformed with your ever-changing needs.

Perfect for...



Cabin or motel  
room



Granny flat



Home office



Studio space

The **Transform A Home Studio** is the most compact model, at 30m<sup>2</sup> including balcony, and less than 3.5 tonnes. This space can truly transform to any requirement you need, from home office to overnight cabin.

With large windows, floor-to-ceiling sliding doors, large undercover balcony and 2.6m high ceilings we've created a not-so-tiny home. Double glazed windows retain the warmth and cool air internally, whilst keeping any outside noise at bay.

Including built-in wardrobes and generous storage solutions in every room, plus full size shower and toilet combine to make a practical, functional and pleasant place to start and end your day.



# about TRANSFORM A HOME STUDIO



## Towable

Transform A Homes allow your home to move with you as your needs change. Our towable homes also provide easy relocation enabling investors to follow the highest rental yields.



## Registrable

This means no Council approval is required to set up your home, as long as it's residing in an area that permits caravans. Just register and you can have a home that moves wherever life takes you.



## Expandable

What makes our home unique is that it's not a caravan and although compact, it's definitely not what you'd call a tiny home. Our home can be doubled in size within hours and setup to be self-sustaining even in an off-grid location.



# INCLUSIONS

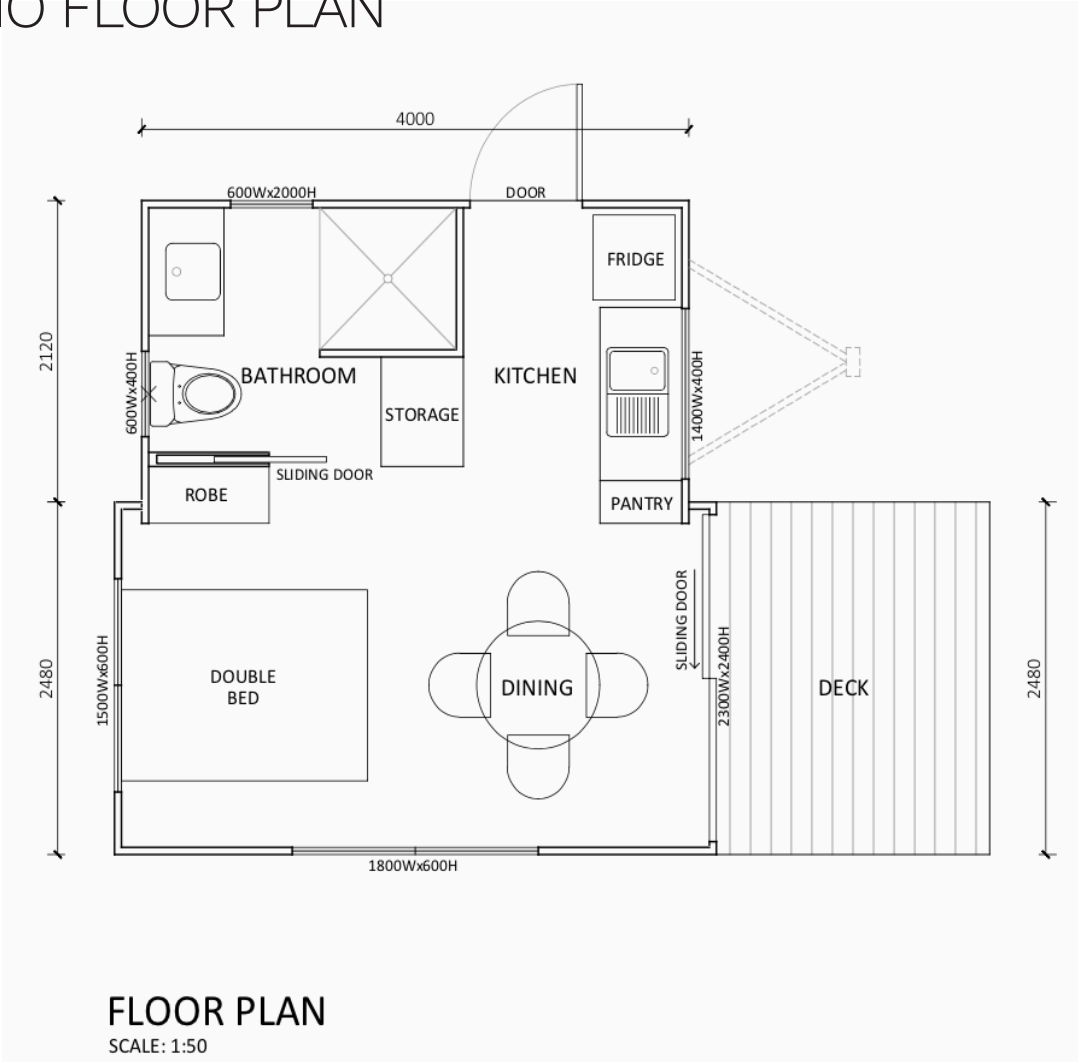
|   | standard | optional         |
|---|----------|------------------|
| Reverse cycle air conditioning unit     | ●        |                  |
| Hot water system; gas                   | ●        |                  |
| Power; 240 v/ 15 amp                    | ●        | Solar            |
| Windows + insect screens                | ●        | Security screens |
| Toilet                                  | ●        | Eco toilet       |
| Shower with exhaust fan                 | ●        |                  |
| Kitchenette with pantry                 | ●        |                  |
| Integrated storage cabinet + shelving   | ●        |                  |
| Undercover balcony with safety rails    | ●        |                  |
| External side entry door with staircase | ●        |                  |
| External Skirts                         |          | Ramps ●          |
| Floor coverings; vinyl                  | ●        | Carpet ●         |
| External cladding and paint             |          | ●                |

# DIMENSIONS

|                    |             |
|--------------------|-------------|
| Length of house    | 4.2m        |
| Length incl. deck  | 6.4m        |
| Expanded width     | 4.6m        |
| Towing length      | 6m          |
| Towing width       | 2.5m        |
| Weight approx.     | 3500kg      |
| Height             | 3.6m        |
| Front deck         | 2m x 2.5m   |
| Front deck height  | 750mm       |
| Hand rail height   | 900mm       |
| Front sliding door | 2.2m x 2.4m |
| Deck stairs        | 800mm wide  |
| Downpipes          | 65mm        |

\*Inclusions and dimensions subject to change without notice

# STUDIO FLOOR PLAN





# TOWABLE

**Our homes can be relocated  
anywhere, anytime.**

## CUSTOMISE

### Furniture Package

With our optional packages you can have your home arrive fully furnished. Just turn up and relax on your spacious deck.

### Customised Homes

All of the homes can be customised with external cladding or can be painted to create a facade that best suits your environment and ever changing needs.

### Finance & Investment

Flexible finance options for individuals and investors.

## PLUG & PLAY



Afford A Home products are designed to be setup and fully functioning within hours.



Once we've set up and expanded your home, you simply need to plug into a garden hose, plug in a 240v 15 amp lead, and connect sewerage and grey water.



Complete off-the-grid capability is also available with our eco toilet and solar options.

## GET IN TOUCH

### Visit our new display centre at...

#### Unique Housing Solutions

130 Temuka-Orari Highway,  
Winchester 7985

### Contact our team

[www.uhs.nz](http://www.uhs.nz)

[info@uhs.nz](mailto:info@uhs.nz)

+64 27 242 6252